



PL-L

16.5PL-L/COR/22-835/IF22/P/4P/DIM 10/1

CorePro, LED, PL-L, 564 mm, 16.5 W, 3500 K, 2200 lm, 50000 hour(s)

Philips MainsFit (UL Type B) LED lamps make the transition to LED from CFL lamps as simple as replacing a lamp. With a wide array of color temperatures, the InstantFit LED lamps can quickly and effectively replace compact fluorescent lamps.

Product data

General Information		Power Consumption	
Cap-Base	2G11	Power Consumption	16.5 W
Nominal lifetime	50,000 hour(s)	Lamp Current (Max)	400 mA
Switching Cycle	50,000	Lamp Current (Min)	200 mA
Lighting Technology	LED	Wattage Equivalent	40 W
		Starting Time (Nom)	0.5 s
		Warm-up time to 60% light	0.5 s
		Power Factor (Fraction)	0.9
		Voltage (Nom)	70-110 V
		UL Type	UL Type A
Light Technical		Temperature	
Color Code	835 [CCT of 3500K]	T-Case Maximum (Nom)	75 °C
Beam Angle (Nom)	160 degree(s)		
Luminous Flux	2,200 lm	Controls and Dimming	
Color Designation	White (WH)	Dimmable	Only with specific dimmers
Correlated Color Temperature (Nom)	3500 K		
Luminous Efficacy (rated) (Nom)	133.00 lm/W	Mechanical and Housing	
Color Consistency	<6	Bulb Finish	Frosted
Color rendering index (CRI)	82	Bulb Material	Plastic
LLMF At End Of Nominal Lifetime (Nom)	70 %	Product Length	564 mm
Operating and Electrical			
Line Frequency	40000-160000 Hz		
Input Frequency	40000-160000 Hz		

PL-L

Bulb Shape	PL-L
Net Weight (Piece)	0.170 kg

Approval and Application

Energy Saving Product	Yes
Approval Marks	UL certificate RoHS compliance DLC compliance
Energy Certifications	DLC Standard
EU RoHS compliant	Yes
Ambient temperature range	-20 °C to 45 °C

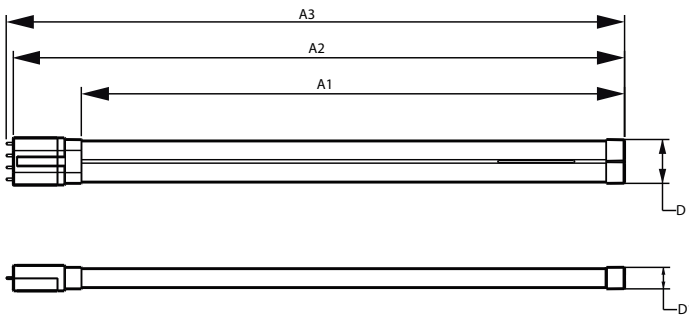
Application Conditions

can it be used in closed luminaires	Yes
-------------------------------------	-----

Product Data

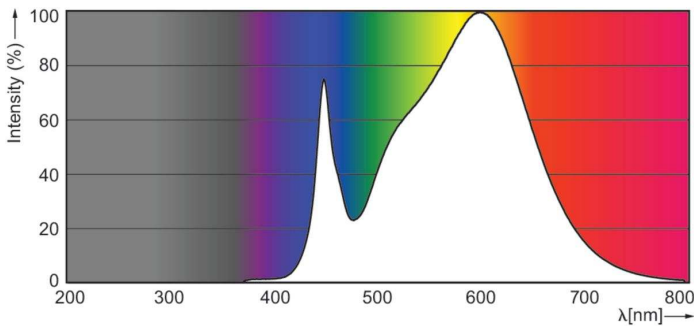
Order product name	16.5PL-L/COR/22-835/IF22/P/4P/DIM 10/1
Full product name	16.5PL-L/COR/22-835/IF22/P/4P/DIM 10/1
Order code	532903
Material Nr. (12NC)	929001893604
Numerator - Quantity Per Pack	1
EAN/UPC - Product/Case	046677532901
Numerator - Packs per outer box	10
EAN/UPC - Case	50046677532906

Dimensional drawing

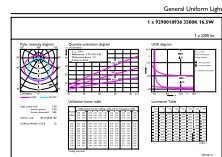


Product	D1	D	A1	A2	A3
16.5PL-L/COR/22-835/IF22/P/4P/DIM 10/1	20 mm	40.6 mm	501 mm	564 mm	570.6 mm

Photometric data

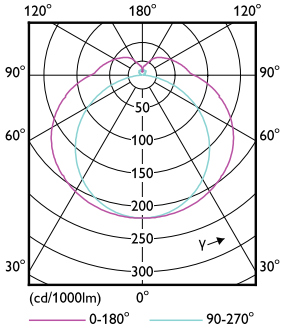


Spectral Power Distribution Colour - 16.5PL-L/COR/22-835/IF22/P/4P/DIM 10/1



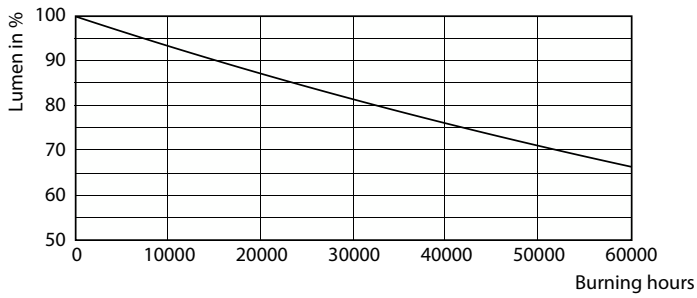
General uniform lighting - 16.5PL-L/COR/22-835/IF22/P/4P/DIM 10/1

Photometric data

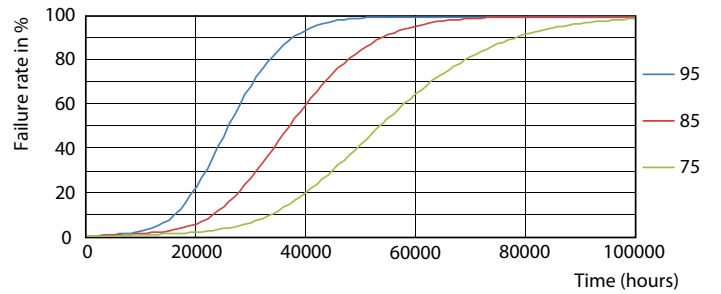


Light Distribution Diagram - 16.5PL-L/COR/22-835/IF22/P/4P/DIM 10/1

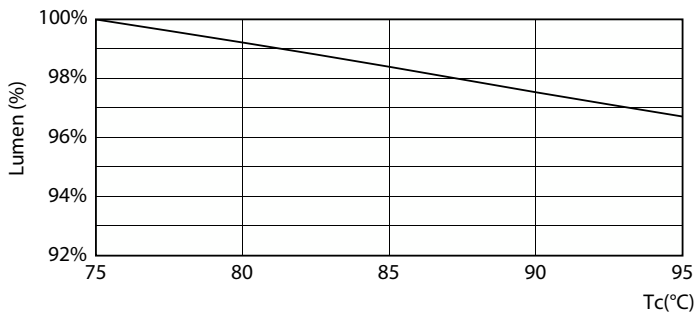
Lifetime



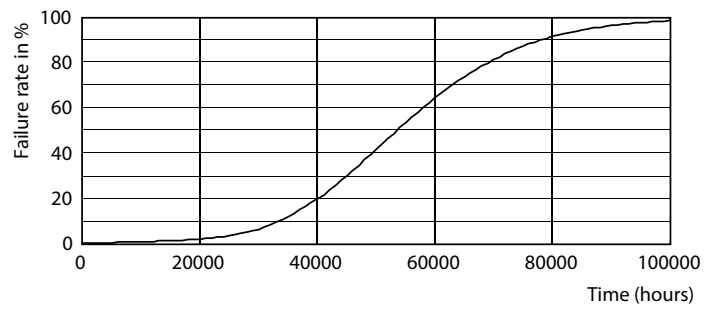
Lumen Maintenance Diagram - 16.5PL-L/COR/22-835/IF22/P/4P/DIM 10/1



16-5W 2G11



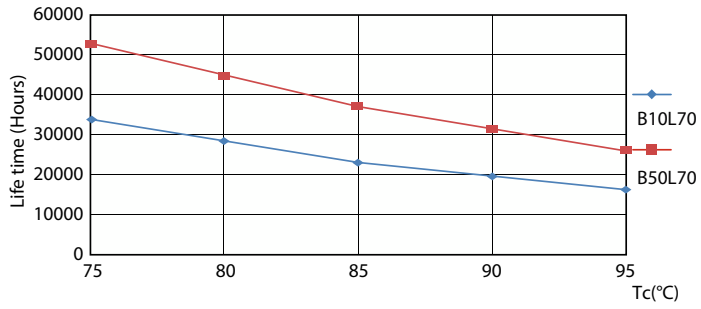
Lumen Maintenance Diagram - 16.5PL-L/COR/22-835/IF22/P/4P/DIM 10/1



16-5W 2G11

PL-L

Lifetime



16-5W 2G11

